

PLAT III OF NINETY FIVE RIVERSIDE, P. U. D.

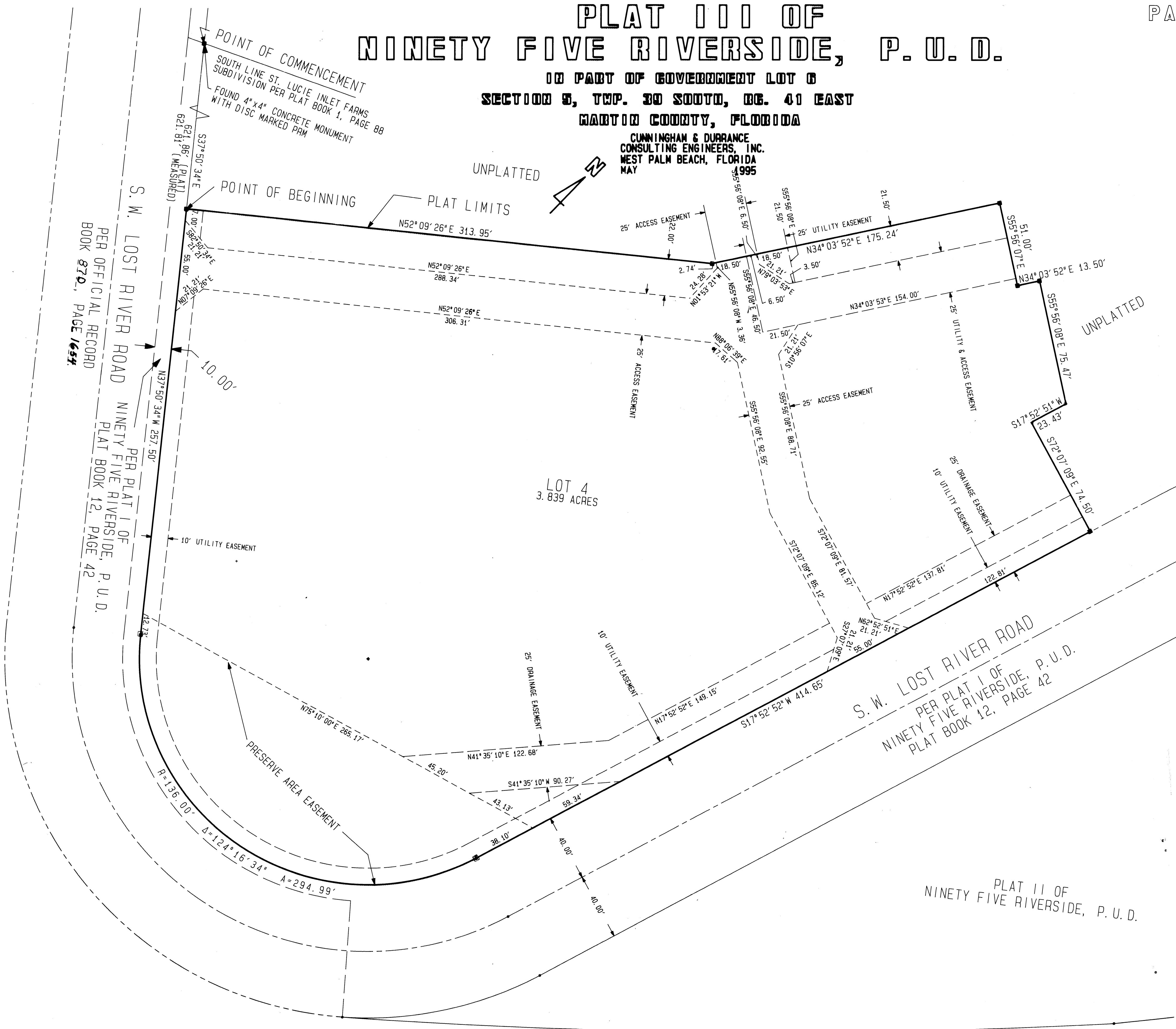
IN PART OF GOVERNMENT LOT 6
SECTION 9, TWP. 30 SOUTH, RG. 41 EAST
MARTIN COUNTY, FLORIDA

CUNNINGHAM & DURRANCE
CONSULTING ENGINEERS, INC.
WEST PALM BEACH, FLORIDA
MAY 1995

I, MARSHA STILLER, CLERK OF THE CIR-
CUIT COURT OF MARTIN COUNTY, FLORIDA,
HEREBY CERTIFY THAT THIS PLAT WAS FILED
FOR RECORD IN PLAT BOOK 13, PAGE 22
MARTIN COUNTY, FLORIDA, PUBLIC RECORDS,
THIS 22 DAY OF June 1995.

MARSHA STILLER, CLERK
CIRCUIT COURT
MARTIN COUNTY, FLORIDA

BY: *[Signature]*
FILE No. DEPUTY CLERK
1120247



NOTES

- denotes Permanent Reference Monument set
- denotes Permanent Reference Monument found
- All bearings are Referenced to the Right of Way of Access Road No. 2 as shown on Florida Department of Transportation Right of Way Map 89095-1412
- Building Setback Lines shall be as required by Martin County Zoning Regulations.
- No building or any kind of construction shall be placed on Utility or Drainage Easements.
- No structures, trees or shrubs shall be placed on Drainage Easements.
- Easements are for Public Utilities unless otherwise noted.
- Approval of landscaping on utility easements shall be only with the approval of all utilities occupying same.

